

Style 65

Compression Couplings & Fittings

Boltless Factory-assembled Fittings for Plain-end Steel Pipe Connections

Dresser® Style 65 Fittings Feature:

- **Simple, Fast Installation** - Shipped completely assembled and ready to use, Dresser Style 65 compression fittings install quickly onto plain-end pipe or tubing. Simply loosen the end nuts, stab the pipe into the fittings and tighten end nuts with a wrench. The connection is complete in less than a minute! No threading, flaring or exact pipe fitting required. Plus, the pipe joint can be easily disassembled for cleaning or repairs.
- **Proven Working Principle** - Style 65 compression fittings employ the same time-proven sealing principle that was developed by Dresser in 1891.
- **Flexible Union** - The resilient gasket sealing principle provides permanent flexibility while absorbing expansion, contraction, vibration, stresses and deflection movement.
- **Creates a Uniform Joint** - Threaded pipes rob a pipe end of 40% of its strength. With Dresser Style 65 compression fittings you can use plain-end pipe and maintain uniform wall thickness throughout every joint in your piping system.

Dresser® Style 65's are available in regular and long couplings, 90° Ell, and male and female adapters. Style 65 bodies are made of either steel or malleable iron; fitting bodies constructed of malleable iron conform to ANSI specifications for 150 psi rated fittings. The gasket retainer ring is made of cold-rolled carbon steel.

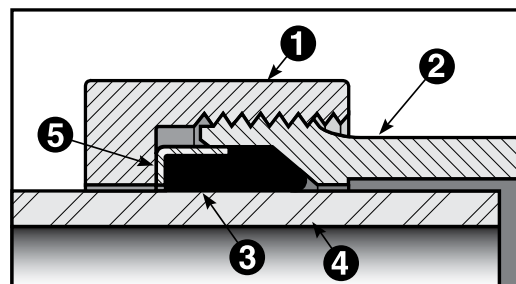
Dresser Grade 27 Armored® gaskets are supplied as standard, with Grade 42 Armored oil resistant gaskets available for special applications on request.

NOTE: Regular Style 65 couplings and fittings should not be used for temperatures over 150° F. For temperatures above 150° F. and up to 350° F., Style 165 Plus-Temp™ fittings are recommended. See the Style 165 data on the Dresser web site under Water Market Products at: www.dressercouplings.com.



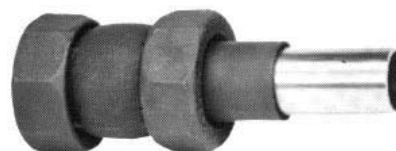
Style 65 Components

Illustrated below is a cut-away section of the Dresser® Style 65 coupling to show the working principle.

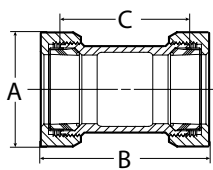
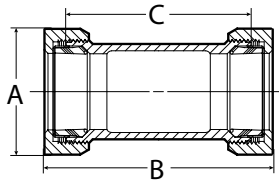
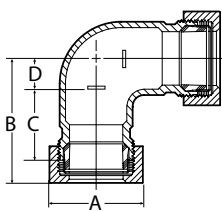
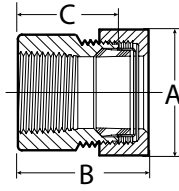
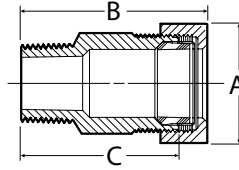


(1) Threaded end-nuts screw onto the threaded body (2), compressing the gaskets (3) against the pipe (4) to make a flexible, bottle-tight seal. The gaskets are confined and protected from damage by retainer rings (5). Note the heavy body construction and ample seating area of the resilient gasket.

Insulating Adapter Gaskets are used with Style 65 couplings to insulate between dissimilar metals to prevent galvanic corrosion, or to break current flow along the pipe. Gasket sleeves are particularly convenient when connecting steel pipe and copper tubing of the same nominal size.



Style 65 Compression Fittings Specifications

Nominal Size Steel (In.)	Outside Diameter (O.D.) (In.)	PART NUMBER Dresser E-Coat (001) Galvanized (003)	Overall Dimensions				Dimension Drawings
			A	B	C	D	
REGULAR COUPLINGS							
1/2	.840	0065-0002-001(003)	1-17/32	2-5/8	2	--	
3/4	1.050	0065-0003-001(003)	1-27/32	2-21/32	2	--	
1	1.315	0065-0004-001(003)	2-3/16	2-13/16	2-1/4	--	
1-1/4	1.660	0065-0005-001(003)	2-5/8	3-1/4	2-1/2	--	
1-1/2	1.900	0065-0006-001(003)	2-15/16	3-9/16	2-3/4	--	
2	2.375	0065-0007-001(003)	3-19/32	3-7/8	3	--	
LONG COUPLINGS							
1/2	.840	0065-0030-001(003)	1-17/32	4-1/8	3-1/2	--	
3/4	1.050	0065-0031-001(003)	1-27/32	4-13/32	3-3/4	--	
1	1.315	0065-0032-001(003)	2-3/16	4-11/16	4	--	
1-1/4	1.660	0065-0033-001(003)	2-5/8	5	4-1/4	--	
1-1/2	1.900	0065-0034-001(003)	2-15/16	5-3/16	4-1/2	--	
2	2.375	0065-0035-001(003)	3-19/32	5-1/8	4-3/4	--	
90° ELLS							
1/2	.840	0065-0090-003	1-17/32	2-1/32	1-1/4	15/32	
3/4	1.050	0065-0091-003	1-27/32	2-5/16	1-13/32	9/16	
1	1.315	0065-0092-003	2-3/16	2-11/16	1-5/8	23/32	
1-1/4	1.660	0065-0093-003	2-15/16	3-3/32	1-27/32	7/8	
1-1/2	1.900	0065-0094-003	2-15/16	3-13/32	2	1	
2	2.375	0065-0095-003	3-19/32	3-31/32	2-9/32	1-1/4	
FEMALE ADAPTERS							
3/4	1.050	0065-0201-003	1-27/32	1-15/16	1-1/32	--	
1	1.315	0065-0202-003	2-3/16	2-3/16	1-5/32	--	
2	2.375	0065-0205-003	3-19/32	2-7/8	1-9/16	--	
MALE ADAPTERS							
1/2	.840	0065-0207-003	1-17/32	2-11/16	1-1/4	--	
3/4	1.050	0065-0208-003	1-27/32	2-9/32	1-1/4	--	
1	1.315	0065-0209-003	2-3/16	2-7/32	1-15/32	--	
1-1/4	1.660	0065-0210-003	2-15/16	3-1/16	1-1/8	--	
1-1/2	1.900	0065-0211-003	2-15/16	3-1/32	1-7/32	--	
2	2.375	0065-0212-003	3-19/32	3-1/16	1-3/8	--	

All dimensions are maximum, approximate and given in inches.

Gaskets included with all fittings are Dresser ARMORED A few services may require plain or special gaskets; priced on application.

Dimension "A" is measurement across the corner of octagonal end nut. The "across flats" dimension of nut is slightly less.

Standard finishes of e-coat and galvanized for regular and long couplings; galvanized only for 90 Ells, female and male adapters.

WARNING NOTE: Where pipe movement out of the coupling or fitting may occur, pipe should be properly anchored.

SUPPLIED BY:

ANODE
ENGINEERING
Anode Engineering Pty Ltd | Engineering Services
P: 1800 446 400
E: admin@anodeengineering.com
www.anodeengineering.com

SUPPLIED BY:

LORDCO
AN ANODE ENGINEERING COMPANY
Lordco New Zealand
P: +64 4 939 3944
E: sales@lordco.co.nz
www.lordco.co.nz