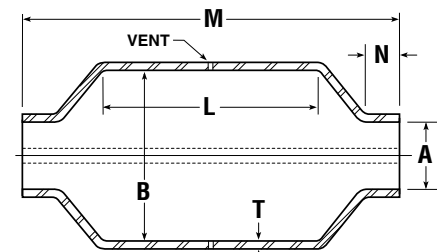


Full-Circle Split Reinforcing Sleeves

Style 220 Pipeline Reinforcing Sleeve



- For reinforcement or upgrading older coupled lines. Style 220 reinforcing sleeves are commonly used to reinforce pipelines with corrosion pits, stress cracks or vents and offer permanent repair over couplings, flanges, valves or leaking collars. The Style 220 “pumpkin” sleeve also provides a means of being “double sure” of safety against pipe end pullout.
- Product lends itself to field welding, without preheating, using ordinary field welding procedures. All sleeves are factory prepared with standard welding bevel, machine flame cut for uniformity and ease of welding. Drilled vent hole precludes pressure build up between sleeve and pipe. Optional use of Dresser Style 90 Tap-N-Valve Tee is available as shown on back cover to depressurize the sleeve.
- Supplied in all sizes and weights as shown in chart below. Larger diameters and longer sleeve lengths may be fabricated to customer specifications.



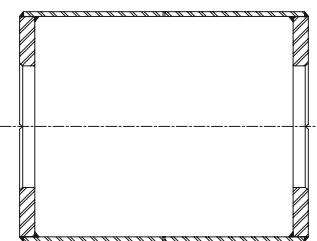
Standard Style 220 formed sleeve cutaway

Style 220 Reinforcing Sleeve Sizes and Specifications for 2" thru 26"

Nom. Pipe Size	ID "A" & Pipe OD	Inside Diam. "B"	Inside Length "L"	Outlet Dimen. "N"	Overall Length "M"	Thickness "T"	Approx. Shipping Wt. (lbs.)
2*	2-3/8	8-3/8	10-1/2	1-1/4	23-1/4	5/16	45
3*	3-1/2	9-1/2	10-1/2	1-1/4	23-1/4	5/16	49
4	4-1/2	10-1/2	10	2	20-1/4	5/16	54
6	6-5/8	12-5/8	13-1/2	1-3/8	21-3/4	3/8	96
8	8-5/8	14-5/8	13-1/3	1-3/8	21-3/4	3/8	112
10	10-3/4	16-3/4	13-1/2	1-3/8	21-3/4	3/8	128
10	10-3/4	16-3/4	13-1/2	1-3/8	21-3/4	1/2	175
12	12-3/4	18-3/4	13-1/2	1-3/8	21-3/4	3/8	150
12	12-3/4	18-3/4	13-1/2	1-3/8	21-3/4	1/2	198
14	14	20	13-1/2	1-3/8	21-3/4	3/8	160
14	14	20	13-1/2	1-3/8	21-3/4	1/2	215
16	16	22	13-1/2	1-3/8	21-3/4	3/8	176
16	16	22	13-1/2	1-3/8	21-3/4	1/2	240
18	18	24	13-1/2	1-3/8	21-3/4	3/8	195
18	18	24	13-1/2	1-3/8	21-3/4	1/2	260
20	20	26	13-1/2	1-3/8	21-3/4	3/8	216
20	20	26	13-1/2	1-3/8	21-3/4	1/2	288
22	22	28	13-1/2	1-3/8	21-3/4	3/8	230
22	22	28	13-1/2	1-3/8	21-3/4	1/2	307
24	24	30	13-1/2	1-3/8	21-3/4	3/8	248
24	24	30	13-1/2	1-3/8	21-3/4	1/2	330
26	26	32	13-1/2	1-3/8	21-3/4	3/8	315
26	26	32	13-1/2	1-3/8	21-3/4	1/2	350

NOTE: Larger diameters available upon request. Please consult factory with your particular application requirements.

* 2" and 3" sizes have minimum yield strength of 35,000 psi.



Typical Style 220 custom-fabricated for non-standard applications

Materials of Construction

Body: High strength, low carbon steel meeting ASTM A572 GR 50/ ASTM A588

Style 220 Pressure Ratings

See chart on page 9

Yield Strength
50,000 PSI Min.

Temperature Ratings

-20° to +150°F

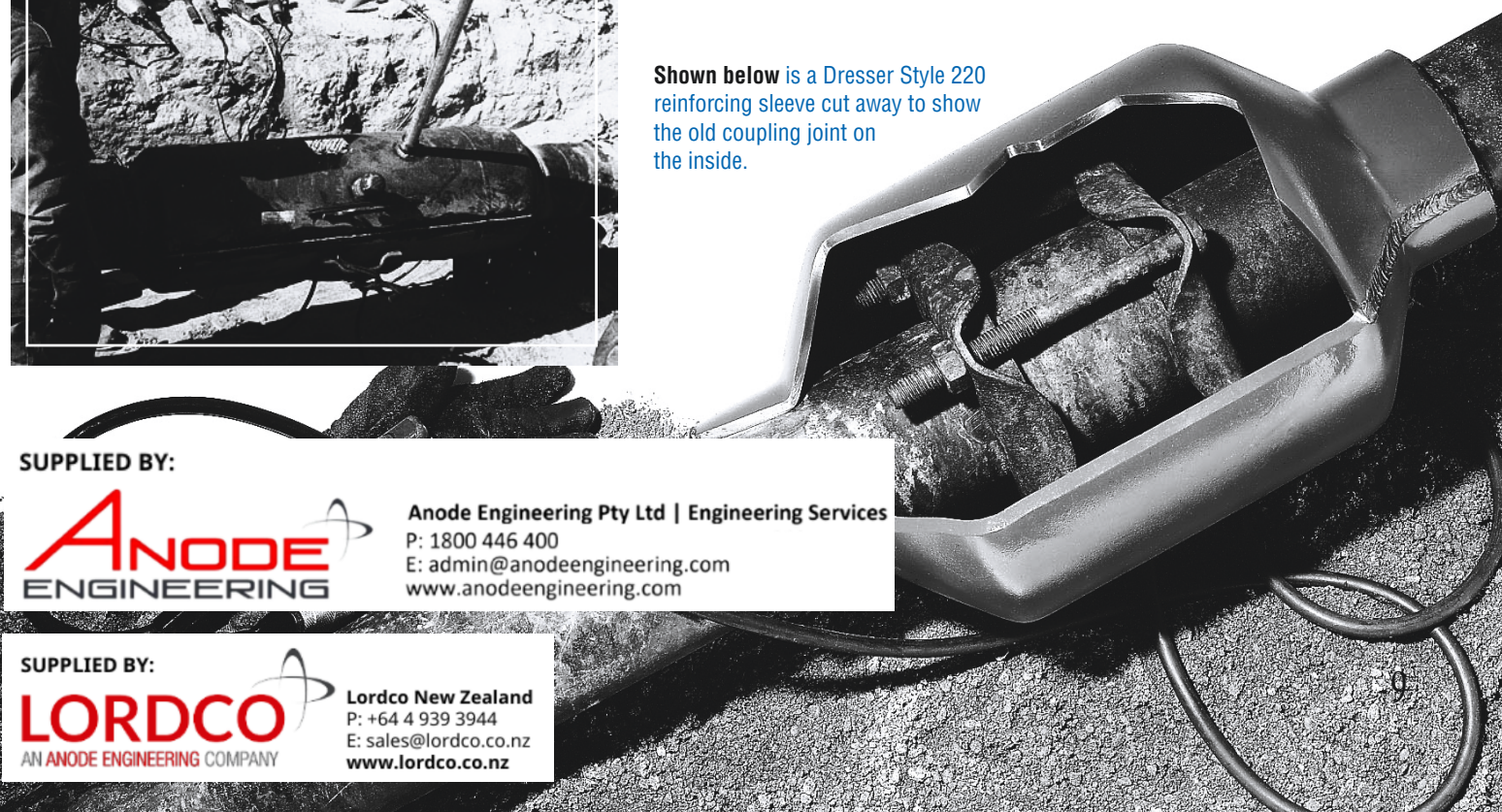
Style 220 Reinforcing Sleeve Pressure Ratings

PRODUCT		PRESSURE RATING (MAXIMUM OPERATING PRESSURE)			
Style 220	Pipe Size x Wall Thickness	Class Location			
		Class 1	Class 2	Class 3	Class 4
<p>NOTE: Style 220 design for Gas pressure for each class location has been determined using the formula shown in D.O.T. Regulation 192, Section 192.105, assuming an 80% joint factor for the longitudinal field weld.</p> <p>For Oil applications refer to Class 1 Ratings as per D.O.T. Regulation 195.</p>	2-3/8" O.D. x 5/16" Wall	1200 G	1000 G	825 G	650 G
	3-1/2" O.D. x 5/16" Wall	1000 G	875 G	725 G	575 G
	4-1/2" O.D. x 5/16" Wall	1615 G	1345 G	1120 G	895 G
	6-5/8" O.D. x 3/8" Wall	1610 G	1345 G	1120 G	895 G
	8-5/8" O.D. x 3/8" Wall	1400 G	1170 G	975 G	780 G
	10-3/4" O.D. x 1/4" Wall	830 G	695 G	580 G	460 G
	10-3/4" O.D. x 3/8" Wall	1230 G	1025 G	855 G	685 G
	10-3/4" O.D. x 1/2" Wall	1620 G	1350 G	1125 G	900 G
	12-3/4" O.D. x 3/8" Wall	1105 G	920 G	765 G	615 G
	12-3/4" O.D. x 1/2" Wall	1455 G	1215 G	1010 G	810 G
	14" O.D. x 3/8" Wall	1040 G	865 G	720 G	575 G
	14" O.D. x 1/2" Wall	1370 G	1140 G	950 G	760 G
	16" O.D. x 3/8" Wall	945 G	790 G	655 G	525 G
	16" O.D. x 1/2" Wall	1250 G	1040 G	870 G	695 G
	18" O.D. x 3/8" Wall	870 G	725 G	605 G	480 G
	18" O.D. x 1/2" Wall	1150 G	960 G	800 G	640 G
	20" O.D. x 3/8" Wall	805 G	670 G	560 G	445 G
	20" O.D. x 1/2" Wall	1065 G	885 G	740 G	590 G
	22" O.D. x 3/8" Wall	750 G	625 G	520 G	415 G
	22" O.D. x 1/2" Wall	990 G	825 G	690 G	550 G
	24" O.D. x 3/8" Wall	700 G	585 G	485 G	390 G
	24" O.D. x 1/2" Wall	925 G	770 G	645 G	515 G
	26" O.D. x 3/8" Wall	655 G	545 G	455 G	365 G
	26" O.D. x 1/2" Wall	870 G	725 G	605 G	480 G



At left, this Dresser Style 220 split repair sleeve was vented for pressure relief during field welding operations. Dresser repair sleeves may be fabricated to any diameter or length.

Shown below is a Dresser Style 220 reinforcing sleeve cut away to show the old coupling joint on the inside.



SUPPLIED BY:

ANODE
ENGINEERING

Anode Engineering Pty Ltd | Engineering Services
P: 1800 446 400
E: admin@anodeengineering.com
www.anodeengineering.com

SUPPLIED BY:

LORDCO
AN ANODE ENGINEERING COMPANY

Lordco New Zealand
P: +64 4 939 3944
E: sales@lordco.co.nz
www.lordco.co.nz