

# DRESSER®

## Style 131 Dismantling Joint

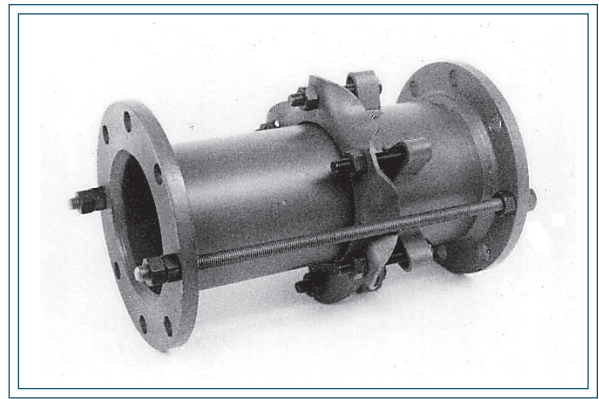
The Dresser Style 131 Dismantling Joint is a double-ended flanged adapter that allows for longitudinal adjustment in piping systems where flanged end pipe is the standard. This product will provide the maximum in flexibility when installing and maintaining flanged end pipe interfaces with check valves, gate valves, ball valves, pumps, blowers, meters, engines, compressors, various fittings and appurtenances.

A typical dismantling joint would be used in a pump house, a blower house, a lift station or anywhere that a flanged end piping accessory, such as a valve or pump, requires quick installation or removal. The product eliminates the need to drop an inlet or discharge pipe leg normally associated with flanged end pipe. It also allows for up to 2 degrees of misalignment, and can be designed to provide from 2" to 20" of longitudinal adjustment to the pipe ends.

This longitudinal adjustment, provided by a telescoping flanged spool piece, can be limited with the addition of tie rods, which are integral with the joint. As a consequence of this flexibility, center to center dimensions become less critical to the installer and installation time is reduced considerably.

Dresser Dismantling Joints are available in diameters ranging from 4" through 24" in standard designs, and through 96" in diameter for custom-engineered designs. The Dresser Dismantling Joint is fabricated in either carbon steel or stainless steel. Standard designs include flanges drilled to mate with AWWA Class B and Class D with a maximum working pressure of 150 PSI. Higher pressure ratings available upon request.

The Dresser Dismantling Joint is available in a variety of coatings to suit operating and environmental conditions, and gasket compounds are selected for compatibility with line content with the standard gasket available in a Dresser Grade 27 Buna S compound.



### Material Specifications

Spool Piece: Steel - AISI C1010-C1015

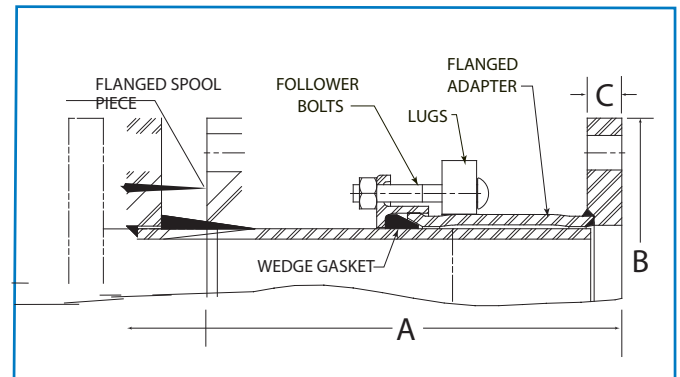
Flange Adapter: Steel - AISI C1010-C1015

Tie Rods (2) (Optional): Steel - ASTM A193 Grade B1

Nuts: ASTM A194 Grade 2H

Gasket: Dresser Grade 27 BUNA-S Rubber

Coatings: All metal parts coated with Dresser shop coat solution. For other coatings available contact Dresser Customer Service.



### Style 131 Dimension Specifications 4" through 24"

Nominal Size	Closed Length (A)	Tie Rod (Optional)		Min. Flange Thickness (C)	Flange O.D. (B)	Nominal Size	Closed Length (A)	Tie Rod (Optional)		Min. Flange Thickness (C)	Flange O.D. (B)
		Diam.	Length					Diam.	Length		
4"	12-3/8"	5/8"	22"	5/8"	9"	14"	14"	1"	26"	15/16"	21"
5"	12-3/8"	5/8"	22"	5/8"	10"	16"	14-1/8"	1"	26"	1"	23-1/2"
6"	12-3/4"	3/4"	24"	11/16"	11"	18"	14-1/2"	1-1/8"	26"	1-1/16"	25"
8"	12-3/4"	3/4"	24"	11/16"	13-1/2"	20"	14-5/8"	1-1/8"	26"	1-1/18"	27-1/2"
10"	13-1/4"	7/8"	24"	11/16"	16"	24"	15-1/8"	1-1/4"	28"	1-1/4"	32"
12"	13-3/8"	7/8"	24"	13/16"	19"	Note 2*					

NOTE 1: Tie rods are designed for 150 PSI Maximum Working Pressure. (Tie rods are optional by request)

NOTE 2: Other types and sizes available on request (e.g. ANSI 150# and 300#)

SUPPLIED BY:

**ANODE**  
ENGINEERING  
Anode Engineering Pty Ltd | Engineering Services  
P: 1800 446 400  
E: admin@anodeengineering.com  
www.anodeengineering.com

SUPPLIED BY:

**LORDCO**  
AN ANODE ENGINEERING COMPANY  
Lordco New Zealand  
P: +64 4 939 3944  
E: sales@lordco.co.nz  
www.lordco.co.nz